



# INDOFINE Chemical Company, Inc.

121 Stryker Lane, Bldg. 30, Suite 1 • Hillsborough, NJ 08844 • U.S.A.

Phone: (908) 359-6778 • FAX: (908) 359-1179

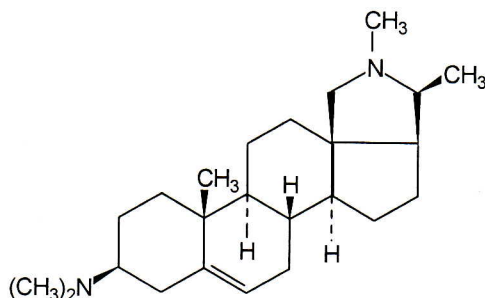
website: [www.indofinechemical.com](http://www.indofinechemical.com)

e-mail: [chemical@indofinechemical.com](mailto:chemical@indofinechemical.com)

## CERTIFICATE OF ANALYSIS

CAT. No.: C-003

<u>Product Name:</u>	<b>CONESSINE</b> (Nerine, Roquessine, Wrightine)
<u>CAS Number:</u>	[546-06-5]
<u>Lot Number:</u>	1006048
<u>Source:</u>	Natural, Holarrhena antidysentrica seeds
<u>Chemical Formula:</u>	C <sub>24</sub> H <sub>40</sub> N <sub>2</sub>
<u>Molecular Weight:</u>	356.59
<u>Melting Point:</u>	121.5-123.5°C
<u>Appearance:</u>	Off white powder
<u>TLC:</u>	Chloroform : Methanol (9:1)
<u>Solubility:</u>	Gives a clear solution in DMSO





# INDOFINE Chemical Company, Inc.

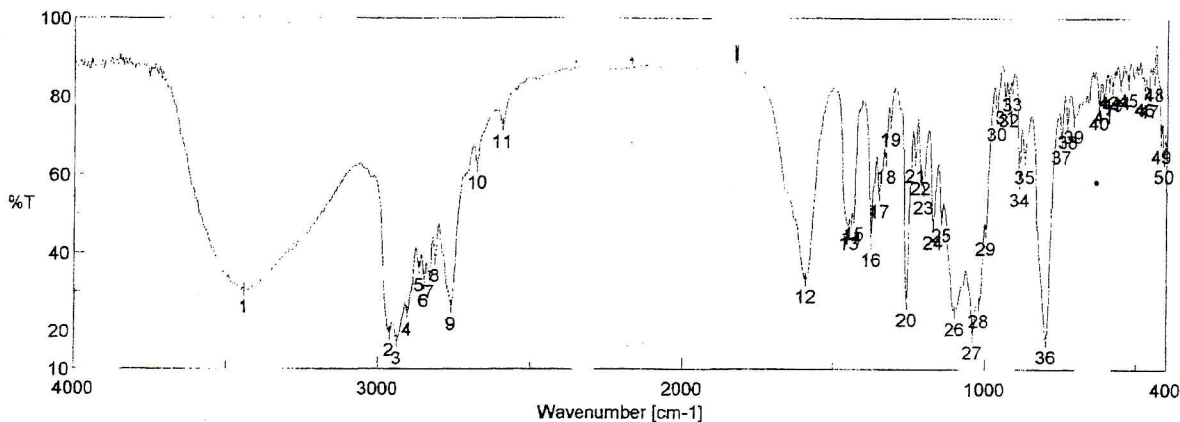
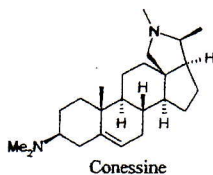
121 Stryker Lane, Bldg. 30, Suite 1 • Hillsborough, NJ 08844 • U.S.A.

Phone: (908) 359-6778 • FAX: (908) 359-1179

website: [www.indofinechemical.com](http://www.indofinechemical.com)

e-mail: [chemical@indofinechemical.com](mailto:chemical@indofinechemical.com)

Cat. No.: C-003  
Product: Conessine  
Lot No.: 1006048



[Comment]

Sample Name CNS (200610A)  
Comment IR  
User RR  
Division R&D  
Company \*\*\*\*\*

Result of Peak Picking

No.	Position	Intensity	No.	Position	Intensity	No.	Position	Intensity
1	3439.42	30.3117	2	2963.09	19.3532	3	2938.98	17.1503
4	2903.31	24.5606	5	2863.77	35.9408	6	2848.35	31.9092
7	2830.03	34.2196	8	2811.7	38.3843	9	2760.6	26.1346
10	2677.68	62.2242	11	2594.75	72.5377	12	1590.99	33.0919
13	1450.21	46.9023	14	1441.53	48.2432	15	1433.82	49.3161
16	1376.93	42.7	17	1350.89	55.0654	18	1329.68	63.8592
19	1315.21	73.4412	20	1261.22	27.189	21	1234.22	64.0998
22	1216.86	61.0375	23	1206.26	56.0978	24	1174.44	47.1578
25	1146.47	48.9922	26	1101.15	24.8698	27	1040.41	18.7371
28	1020.16	26.938	29	997.982	45.5285	30	965.198	74.7356
31	937.235	79.1993	32	925.664	78.4166	33	915.058	82.3993
34	888.059	57.9047	35	871.667	63.7762	36	799.35	17.5438
37	752.102	68.8041	38	731.853	72.7448	39	710.64	74.1768
40	626.752	77.5297	41	611.324	79.31	42	593.004	82.9944
43	581.433	82.4339	44	555.398	82.9126	45	528.4	83.55
46	474.403	81.2555	47	460.904	80.8876	48	443.547	85.1059
49	419.442	69.2397	50	409.799	64.0878			

[Data Information]

Creation Date 6/20/2010 10:27 AM  
Data array type Linear data array  
Horizontal Wavenumber [cm-1]  
Vertical %T  
Start 349.053 cm-1  
End 7800.65 cm-1  
Data pitch 0.964233 cm-1  
Data points 7729

# ICC **INDOFINE Chemical Company, Inc.**

121 Stryker Lane, Bldg. 30, Suite 1 • Hillsborough, NJ 08844 • U.S.A.

Phone: (908) 359-6778 • FAX: (908) 359-1179

website: [www.indofinechemical.com](http://www.indofinechemical.com)

e-mail: [chemical@indofinechemical.com](mailto:chemical@indofinechemical.com)

Cat. No.: C-003  
Product: Conessine  
Lot No.: 1006048

